

Please read and save these instructions. Read carefully before attempting to assemble, install, operate or maintain the product described. Protect yourself and others by observing all safety information. Failure to comply with instructions could result in personal injury and/or property damage! Retain instructions for future reference.

Dayton® Heavy Duty Easy Rolling Hoist Trolleys

Description

Dayton 1/2, 1, and 2 ton capacity free wheeling trolleys adjust to fit 4"-10" I-Beam flange for flexibility in transporting electric, air, or manual hoists in many manufacturing and warehouse applications. Trolleys are comprised of solid machined cast steel wheels with sealed precision bearings to provide exceptional rolling and maintenance free operation.

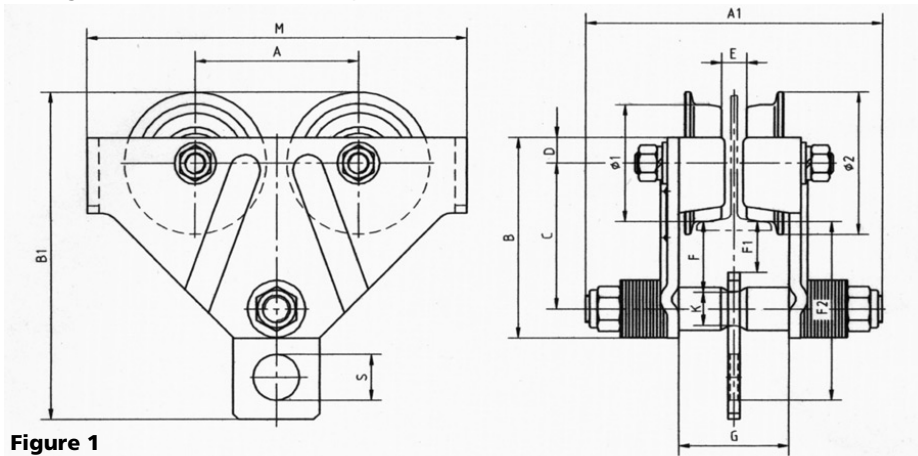


Figure 1



Figure 2

Specifications & Dimensions

Model	Capacity Tons	Clearance Dimensions (Inch)							K Dia.	M (Inch)	Fits I-Beam		Min. Rad.
		A	B	C	D	E*	F*	G*			Vert. H.	Horiz. W.	
3MB56	1/2	4.49	5.98	4.13	0.75	1.02	2.13	3.3	0.89	10.00	4-10"	2.28-5.04"	35"
3MB57	1	5.59	6.89	5.00	0.89	0.87	2.42	3.78	1.14	12.99	5-12	2.60-5.59	47
3MB58	2	6.50	7.52	5.59	0.91	1.54	2.52	4.06	1.26	14.76	6-18	3.31-6.30	51

Model	A1	B1	F2	S	F1	Wheel Tread Dia. $\phi 1$	Headroom to Shaft F	Headroom to Bail F2
3MB56	8.74"	10.00"	4.00"	1.57"	1.42"	3.15"	2.13"	5.79"
3MB57	10.16	11.18	4.88	1.57	1.73	4.02	2.42	6.10
3MB58	10.91	12.17	5.75	1.57	1.85	4.88	2.52	6.22

General Safety Information

1. Be sure all nuts are drawn up securely and trolley plates spaced properly.
2. Make sure moving trolley will clear all obstructions, i.e., electrical wires, overhead lights, etc.
3. Adequate stops must be installed at both ends of I-Beam to prevent trolley from over-traveling beam and falling at either end.
4. Avoid running trolley into beam end stops or other obstructions.
5. Check I-Beam carefully so that trolley can roll smoothly without encountering weld marks, splice plates, beam irregularities, or debris which may have accumulated on beam.
6. Make certain capacity of hoist does not exceed the rated capacity of the trolley assembly and that the supporting structure has a load rated capacity of the trolley plus the weight of the hoist.
7. When mounting hoist to trolley, be sure that there is no interference between the hoist and trolley. Check to see that the latch on the hoist suspension hook is free to close after mounting to the trolley hanger shaft or hanger plate.

Dayton® Heavy Duty Easy Rolling Hoist Trolleys

General Safety Information (Continued)

⚠ WARNING *This equipment is intended for industrial use only and should not be used to support or transport people.*

8. Inspect unit for worn, cracked, distorted, damaged, or loose parts. If problem exists, remove from service immediately.
9. When making repairs, only use identical replacement parts.

Installation

1. The hoisting mechanism must be on the center-line of the hoist trolley. Place equal numbers of the approximately 1/8" thick and 1/16" thick washers on each side of the hanger shaft to obtain the "A" dimension (See Figure 3) between side plates.
 2. Place equal numbers of the remaining washers between the side plates and the locknut. In no case should there be less than 3 of the 1/8" washers between the locknut and side plate.
 3. Tighten the hanger shaft locknut to the minimum torque value as follows:
 - 1/2 Ton capacity (3MB56) - 75 Ft-lbs.
 - 1 Ton capacity (3MB57) - 180 Ft-lbs.
 - 2 Ton capacity (3MB58) - 240 Ft-lbs.
- NOTE:** Hanger shaft must protrude through locknut by a minimum of two full threads.
4. Check "A" dimension.
 5. Observe trolley operation. Trolley should move freely with the flanges on the wheels as close as possible to the edge of the I-Beam. If it appears trolley side plates could be moved closer together with freedom of

movement maintained, remove an equal number of washers from each side to give 1/16" to 1/8" clearance on each side of I-Beam flange and wheel flange.

6. These trolleys can operate on curved beams with radii as small as those listed below:
 - 3MB56 - 35" min. beam radius
 - 3MB57 - 47" min. beam radius
 - 3MB58 - 51" min. beam radius

IMPORTANT: For proper trolley operation, curved beam sections should be smooth and free from irregularities.

7. Make certain that capacity of hoist does not exceed the rated capacity of the trolley assembly and that the supporting structure has a load rating at least equivalent to the rated capacity of the trolley plus the weight of the hoist.
8. A hanger plate is provided with each trolley and should be used when:
 - a. The hoist suspension hook will not fit directly over the hanger shaft.
 - b. The hoist hook latch will not close after mounting to the hanger shaft.
 - c. There is insufficient clearance between the underside of the beam and the hoist hook.
 - d. There is interference between any part of the hoist and the trolley.
 - e. It is more convenient for fast and frequent removal of the hoist from the trolley.

HANGER PLATE

1. Pass the hanger shaft through one hole in the hanger plate before assembling the trolley side plates.

2. The hanger plate should be located in the undercut at the center of the hanger shaft.
3. The lower hole in the hanger plate is then used for suspension of the hoists.

Maintenance

This trolley should be inspected periodically (▲) for wear and its continued ability to support the load. The following procedure should be initiated.

1. Visual inspection of complete assembly for:
 - a. Loose nuts or bolts.
 - b. Wear, cracks or worn bearings on trolley wheels.
 - c. Wear, cracks or distortion on hanger shaft and hanger plate.
 - d. Side plate damage or distortion.
 2. If damaged, remove immediately from service.
 3. Replace all damaged or worn parts with identical replacement parts.
- (▲) The period of inspection will depend on frequency and type of usage. Determination of this period will be based on the user's experience. It is recommended that the user begin with a monthly inspection and extend periods to quarterly, semi-annually or annually based on his monthly experience.

⚠ WARNING *This equipment is for industrial use only and should not be used to support or transport people.*

Models 3MB56 thru 3MB59

Approximate Spacer Washer Adjustment

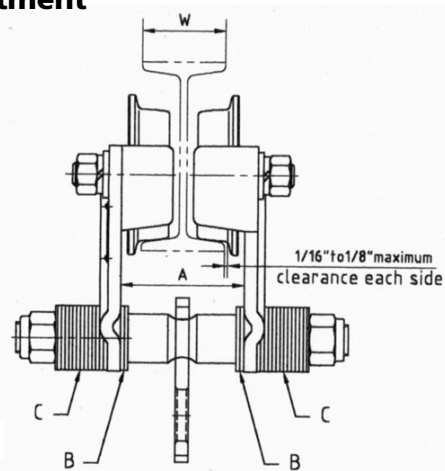


Figure 3

Quantity and Thickness

Flange Width "W"	Model 3MB56 (1/2Ton)					Model 3MB57 (1Ton)					Model 3MB58 (2Ton)				
	"A" Dim. inches	Location "B"		Location "C"		"A" Dim. inches	Location "B"		Location "C"		"A" Dim. inches	Location "B"		Location "C"	
		1/16"	1/8"	1/16"	1/8"		1/16"	1/8"	1/16"	1/8"		1/16"	1/8"	1/16"	1/8"
2.283	3.31	0	0	1	12										
2.402	3.43	1	0	0	12										
2.520	3.54	0	1	1	11										
2.638	3.66	1	1	0	11	3.78	0	0	1	13					
2.756	3.78	0	2	1	10	3.90	1	0	0	13					
2.874	3.90	1	2	0	10	4.02	0	1	1	12					
2.992	4.02	0	3	1	9	4.13	1	1	0	12					
3.110	4.13	1	3	0	9	4.25	0	2	1	11					
3.228	4.25	0	4	1	8	4.37	1	2	0	11					
3.346	4.37	1	4	0	8	4.49	0	3	1	10	4.06	0	0	1	13
3.465	4.49	0	5	1	7	4.61	1	3	0	10	4.17	1	0	0	13
3.583	4.61	1	5	0	7	4.72	0	4	1	9	4.29	0	1	1	12
3.701	4.72	0	6	1	6	4.84	1	4	0	9	4.41	1	1	0	12
3.819	4.84	1	6	0	6	4.96	0	5	1	8	4.53	0	2	1	11
3.937	4.96	0	7	1	5	5.08	1	5	0	8	4.65	1	2	0	11
4.055	5.08	1	7	0	5	5.20	0	6	1	7	4.76	0	3	1	10
4.173	5.20	0	8	1	4	5.31	1	6	0	7	4.88	1	3	0	10
4.291	5.31	1	8	0	4	5.43	0	7	1	6	5.00	0	4	1	9
4.409	5.43	0	9	1	3	5.51	1	7	0	6	5.12	1	4	0	9
4.528	5.51	1	9	0	3	5.67	0	8	1	5	5.24	0	5	1	8
4.646	5.67	0	10	1	2	5.79	1	8	0	5	5.35	1	5	0	8
4.764	5.79	1	10	0	2	5.91	0	9	1	4	5.47	0	6	1	7

Dayton® Heavy Duty Easy Rolling Hoist Trolleys

Quantity and Thickness (Continued)

Flange Width "W"	Model 3MB56 (1/2Ton)					Model 3MB57 (1Ton)					Model 3MB58 (2Ton)				
	"A" Dim. inches	Location "B"		Location "C"		"A" Dim. inches	Location "B"		Location "C"		"A" Dim. inches	Location "B"		Location "C"	
		1/16"	1/8"	1/16"	1/8"		1/16"	1/8"	1/16"	1/8"		1/16"	1/8"	1/16"	1/8"
4.882	5.91	0	11	1	1	6.02	1	9	0	4	5.59	1	6	0	7
5.000	6.02	1	11	0	1	6.14	0	10	1	3	5.71	0	7	1	6
5.118						6.26	1	10	0	3	5.83	1	7	0	6
5.236						6.38	0	11	1	2	5.95	0	8	1	5
5.354						6.50	1	11	0	2	6.06	1	8	0	5
5.472						6.62	0	12	1	1	6.18	0	9	1	4
5.590						6.73	1	12	0	1	6.30	1	9	0	4
5.709											6.42	0	10	1	3
5.827											6.54	1	10	0	3
5.945											6.65	0	11	1	2
6.063											6.77	1	11	0	2
6.181											6.89	0	12	1	1
6.300											7.00	1	12	0	1

NOTE: Due to manufacturing tolerances and possible flange wear, the actual width may vary from the numbers shown. The beam flange width should be checked before mounting trolley and washer spacing should be adjusted accordingly to give 1/16" to 1/8" clearance on each side of I-Beam flange and wheel flange.

For Repair Parts, call 1-800-323-0620

24 hours a day – 365 days a year

Please provide the following information:

- Model number
- Serial number (if any)
- Part description and number as shown in parts list

Address parts correspondence to:

Grainger Parts
P.O. Box 3074
1657 Shermer Road
Northbrook, IL 60065-3074 U.S.A.

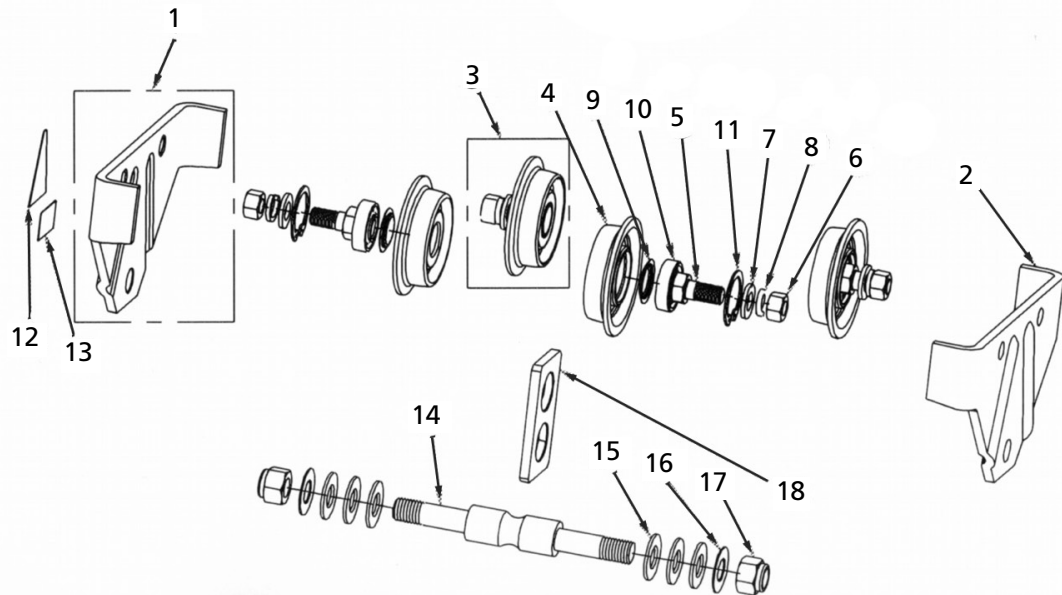


Figure 4 – Repair Parts Illustration

Repair Parts List

Reference Number	Description	Part Number For Models:			Quantity
		3MB56	3MB57	3MB58	
1	Side plate assembly	G2-05-01	G2-1-01	G2-2-01	2
2	Side plate	G2-05-01-SP	G2-1-01-SP	G2-2-01-SP	2
3	Wheel assembly	G2-05-02	G2-1-02	G2-2-02	4
4	Wheel	G2-05-02-W	G2-1-02-W	G2-2-02-W	4
5	Axle	G2-05-02-A	G2-1-02-A	G2-2-02-A	4
6	Axle Nut	G2-05-02-ANT	G2-1-02-ANT	G2-2-02-ANT	4
7	Axle washer	G2-05-02-AW	G2-1-02-AW	G2-2-02-AW	4
8	Axle nut lock washer	G2-05-02-ALW	G2-1-02-ALW	G2-2-02-ALW	4
9	Bearing cover	G2-05-02-BC	G2-1-02-BC	G2-2-02-BC	4
10	Bearing	G2-05-02-B	G2-1-02-B	G2-2-02-B	4
11	Hole lock washer	G2-05-02-HLW	G2-1-02-HLW	G2-2-02-HLW	4
12	Name plate	G2-05-03	G2-1-03	G2-2-03	1
13	Warning label	G2-05-04	G2-1-04	G2-2-04	1
14	Hanger shaft	G2-05-05-HS	G2-1-05	G2-2-05	1
15	Spacing washer 1/8"	G2-05-05-SW (24)	G2-1-05-SW (26)	G2-2-05-SW (26)	
16	Thin spacing washer 1/16"	G2-05-05-TSW	G2-1-05-TSW	G2-2-05-TSW	2
17	Hanger shaft nut	G2-05-05-HSNT	G2-1-05-HSNT	G2-2-05-HSNT	2
18	Hanger plate	G2-05-06	G2-1-06	G2-2-06	1

Dayton® Heavy Duty Easy Rolling Hoist Trolleys

LIMITED WARRANTY

DAYTON ONE-YEAR LIMITED WARRANTY. Heavy Duty Easy Rolling Hoist Trolleys, Models covered in this manual, are warranted by Dayton Electric Mfg. Co. (Dayton) to the original user against defects in workmanship or materials under normal use for one year after date of purchase. Any part which is determined to be defective in material or workmanship and returned to an authorized service location, as Dayton designates, shipping costs prepaid, will be, as the exclusive remedy, repaired or replaced at Dayton's option. For limited warranty claim procedures, see PROMPT DISPOSITION below. This limited warranty gives purchasers specific legal rights which vary from jurisdiction to jurisdiction.

LIMITATION OF LIABILITY. To the extent allowable under applicable law, Dayton's liability for consequential and incidental damages is expressly disclaimed. Dayton's liability in all events is limited to and shall not exceed the purchase price paid.

WARRANTY DISCLAIMER. Dayton has made a diligent effort to provide product information and illustrate the products in this literature accurately; however, such information and illustrations are for the sole purpose of identification, and do not express or imply a warranty that the products are MERCHANTABLE, or FIT FOR A PARTICULAR PURPOSE, or that the products will necessarily conform to the illustrations or descriptions.

Except as provided below, no warranty or affirmation of fact, expressed or implied, other than as stated in the "LIMITED WARRANTY" above is made or authorized by Dayton.

PRODUCT SUITABILITY. Many jurisdictions have codes and regulations governing sales, construction, installation, and/or use of products for certain purposes, which may vary from those in neighboring areas. While Dayton attempts to assure that its products comply with such codes, it cannot guarantee compliance, and cannot be responsible for how the product is installed or used. Before purchase and use of a product, review the product applications, and all applicable national and local codes and regulations, and be sure that the product, installation, and use will comply with them.

Certain aspects of disclaimers are not applicable to consumer products; e.g., (a) some jurisdictions do not allow the exclusion or limitation of incidental or consequential damages, so the above limitation or exclusion may not apply to you; (b) also, some jurisdictions do not allow a limitation on how long an implied warranty lasts, consequently the above limitation may not apply to you; and (c) by law, during the period of this Limited Warranty, any implied warranties of implied merchantability or fitness for a particular purpose applicable to consumer products purchased by consumers, may not be excluded or otherwise disclaimed.

PROMPT DISPOSITION. Dayton will make a good faith effort for prompt correction or other adjustment with respect to any product which proves to be defective within limited warranty. For any product believed to be defective within limited warranty, first write or call dealer from whom the product was purchased. Dealer will give additional directions. If unable to resolve satisfactorily, write to Dayton at address below, giving dealer's name, address, date, and number of dealer's invoice, and describing the nature of the defect. Title and risk of loss pass to buyer on delivery to common carrier. If product was damaged in transit to you, file claim with carrier.

Manufactured for Dayton Electric Mfg. Co., 5959 W. Howard St., Niles, Illinois 60714 U.S.A.
